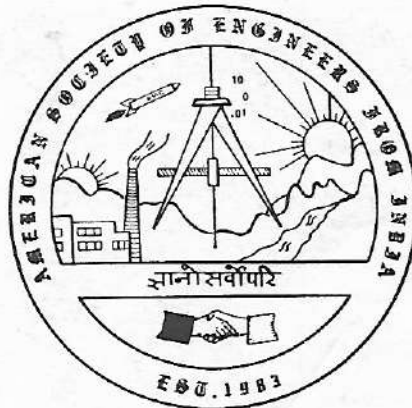


SECOND NATIONAL CONVENTION
AMERICAN
SOCIETY of ENGINEERS
from
INDIA

SATURDAY, AUGUST 17, 1985
NORTHFIELD HILTON, 5500 CROOKS ROAD, TROY



THEME: US/INDIA BUSINESS OPPORTUNITIES

American Society of Engineers from India 

22452 Kendall Avenue • Detroit, Michigan 48223

A.S.E.I. COMMITTEES

BOARD OF DIRECTORS:

Bajaria, Hansraj, Chairman	(313) 277-5692
Shah, Jayprakash, Vice Chairman	(313) 585-1110
Kapadia, Nuruddin, Secretary	(313) 435-9914
Anand, Yogindra	(313) 649-7363
Bindal, Hari	(313) 297-9355
Gupta, Kuldeep	(313) 297-9066
Kapoor, Arun	(313) 637-7012
Khatri, Rajaram	(313) 964-3000
Miranda, Constancio	(313) 927-1042
Naik, Tarun	(414) 963-6696
Pandya, Navin	(313) 355-4600
Prasad, Jaldhar	(313) 721-2100
Sadanandan, Kunissery	(215) 763-8096
Saxena, Ramesh	(213) 391-1792
Saxena, Vijay	(313) 575-2619

CHAIRPERSONS-CHAIRMANS' COMMITTEES:

C1: Nomination	
Patel, Ramesh	(313) 355-4600
C2: Constitution	
Miranda, Constancio	(313) 927-1042
C3: Audit	
Mahida, Vijay	(313) 259-5115
C4: Longrange Planning	
Reshamwala, Ambrish	(313) 588-4800

EXECUTIVE COMMITTEE:

Anand, Yogindra, President	(313) 649-7363
Suri, Kamlaish, Vice President	(313) 435-1286
Mehta, Kanu, Secretary	(313) 956-5489
Bindal, Hari, Treasurer	(313) 297-9355
Shah, Sudhir, Committee Coordinator	(313) 355-4600

CHAIRPERSONS-PRESIDENTS' COMMITTEES:

P1 : Publications	
Bindal, Hari	(313) 297-9355
P2 : Newsletter	
Tejwani, Ashok	(313) 649-7131
P3 : Program Development	
Agarwal, Deepak	(313) 263-6239
P4 : Conventions	
Mehta, Kanu	(313) 956-5489
P5 : Educational	
Naik, Tarun	(414) 963-6696
P6 : Economic Benefits	
Shah, Kundan	(313) 573-1646
P7 : Employment Exchange	
Ghosh, Amar	(313) 552-8255
P8 : Business Development Awareness	
Pandya, Navin	(313) 355-4600
P9 : Investment Awareness	
Patel, Ramesh	(313) 355-4600
P10: Publicity	
Gupta, Kuldeep	(313) 297-9066
P11: Engineering Excellence	
Singh, Harkrishan	(313) 565-7380
P12: Technical Exchange with India	
Rohatgi, Umesh	(313) 337-9957
P13: Legal Affairs	
Akhtar, Jamil	(313) 224-0286
P14: Technical Activities	
Gangopadhyay, Chitta	(313) 577-3789
P15: Membership	
Suri, Kamlaish, Chairperson	(313) 435-1286

ASEI CHAPTER PRESIDENTS:

Chicago, Illinois	
Bhatia, Navin, President	(312) 269-7152
Detroit, Michigan	
Khatri, Rajaram, President	(313) 964-3000

A.S.E.I. wishes to acknowledge the following members for their strenuous efforts in organizing the Second National Convention.

Chairman:	Kanu Mehta
Technical Sessions:	Umesh Rohatgi
Publicity/Promotion:	Kuldeep Gupta
Fund Raising:	Ashok Tejwani Kuldeep Gupta
Exhibits:	Raj Khatri
Host:	Paul Gill
Reception:	Yogi Anand
Entertainment:	Hari Bindal
Awards:	Harkrishan Singh
Chapter:	Yogi Anand
Food:	Jack Agrawal
Student Affairs:	Rita Khatri

From the Constitution of the
American Society of Engineers from India:

PREAMBLE

"We, the Engineering, Architectural, and other allied professionals of Indian Origin i.e. connected with India by birth, education, or ancestry, and residing in North America have felt the need to organize an association for the pursuit of the enhancement of our technical, professional, educational, and economic benefits. Therefore, we, hereby establish an organization to be called American Society of Engineers from India (ASEI)" and adopt the Constitution and Bylaws on August 24th, 1983 in Detroit, Michigan - U.S.A."

The Program Committee has selected the most timely topic of interest to our membership and the engineers of Indian origin in general, **US-INDIA BUSINESS OPPORTUNITIES**, as the theme for the Second National Convention of American Society of Engineers from India.

I believe the era has come in which quite a few of us seeking Business as well as Investment Opportunities in India are ready for action. Our desires simply do not stop there. Many of us are interested in Transfer of the Latest Technology to India. Some of our members are deeply interested in the Development of rural India.

Where can we find immediately usable and action oriented information? The Second National Convention is organized with these interests in mind. You will hear from the experts who deal with the US-INDIA business issues as part of their jobs and have agreed to share their insights. You will also hear experiences of the people who have successfully executed US-INDIA projects.



I hope you take this opportunity to be together with other professionals in sharing the valuable information of common interests.

Hans J. Bajarla
Chairman, Board of Directors
American Society of Engineers from India

The **MAHIDA ACES GROUP** of Firms

- ★ **METCO SERVICES, INC.**
Management, Engineering & Technical Consultants
(313) 259-5115
- ★ **MAHIDA SURVEYING, INC.**
Land Surveying
(313) 259-5116
- ★ **VIJAYSINH U. MAHIDA, P.C.**
Certified Public Accountants
(313) 259-5115
- ★ **MAHIDA & VIRMANI, INC.**
Management Consultants
(313) 259-5116

OFFERS INTEGRATED PROFESSIONAL SERVICES

Dr. Vijay Mahida, CPA, PE, LS

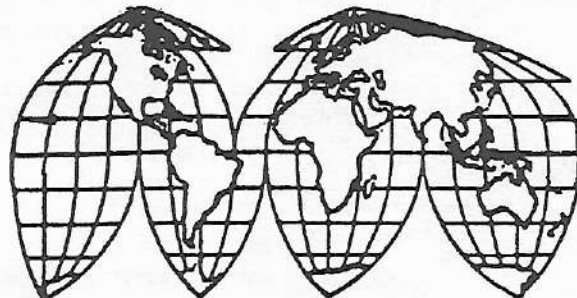
1311 E. Jefferson, Suite 116

Detroit, Michigan 48207

(313) 259-5115

★ Over 25 years in Private Practice ★

U.S.A ★ CANADA ★ WEST GERMANY ★ INDIA



MAHIDA ACES GROUP

Gandhi Urges Expatriates To Return Home

If love of country were enough, most foreign engineering students would choose to return home rather than work in the U.S.

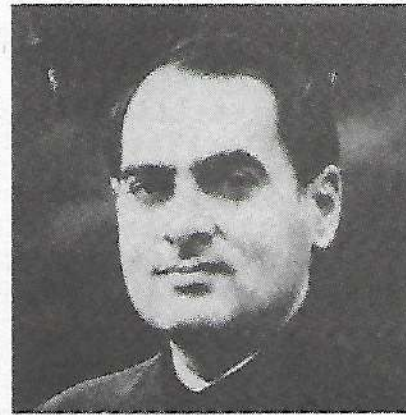
But for many countries with "brain drain" problems, low pay, lack of job opportunities, and high taxes are just a few of the factors that induce foreign technical grads not to return home.

Noting this problem, Indian Prime Minister Rajiv Gandhi told attendees at a National Press Club luncheon June 14 that the emigration of Indian students actually provides an "opportunity" in the long-term. Gandhi said as India moves more into the high-tech age, Indian professionals can take advantage of American technological know-how they've acquired in the U.S. By returning to their homeland and applying their expertise they can make a major contribution toward their country's development.

After the press luncheon, Gandhi traveled to the Houston area the next day, and told a waiting crowd of 2000 Indians, "How curious it is that Indians, when they are abroad, have tremendous initiative . . . but that is something we find slightly lacking in India today."

Gandhi, who once studied mechanical engineering at Cambridge University in England and later became a commercial airline pilot, added, "We appreciate the contributions you are making. We realize the difficulties you would face coming back," he said, indicating that he is determined to ease the "rules, regulations, and tax policy" that have caused Indian engineers and scientists to leave their country.

Pointing out the country's special needs, Gandhi said India needs to keep abreast of advances in agriculture, communications, meteorology, and prospecting.



Indian Prime Minister Rajiv Gandhi.

**Published by N.S.P.E. in
ENGINEERING TIMES**



ENGINEERING MECHANICS RESEARCH CORPORATION

P.O. Box 696 • TROY, MICHIGAN 48099 U.S.A • Tel: (313) 643-6222 • Telex: 469232

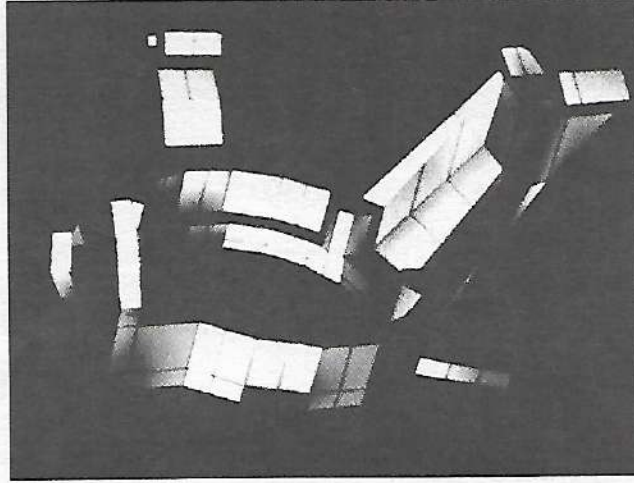
NISA/DISPLAY

WHY BUY NISA/DISPLAY RATHER THAN OTHER FINITE ELEMENT PROGRAMS?

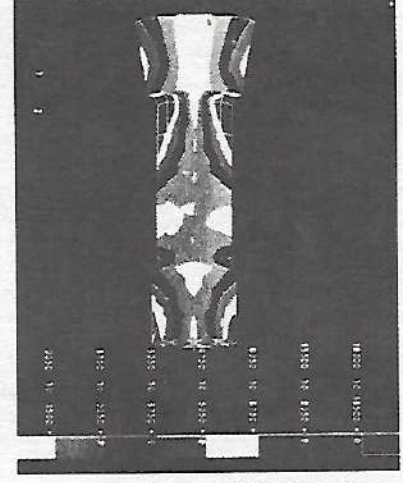
- LOWEST COMPETITIVE PRICING ■ OUTSTANDING PERFORMANCE ■ EXCELLENT PRODUCT SUPPORT ■ FREE MULTIPLE COPIES ■ PRE- and POST-PROCESSING INTERFACES WITH ALL MAJOR CAD/CAM SYSTEMS ■ AVAILABILITY ON ALL MAJOR COMPUTERS: MAINFRAME – PERSONAL COMPUTERS ■ EMRC'S UNIQUE FREE THREE MONTH TRIAL OFFER TO QUALIFIED CUSTOMERS ■ NISA'S COMPOSITE CAPABILITIES ARE CONSIDERED THE BEST BY MANY CORPORATIONS



NISA/MOVIE.BYU INTERFACE



NISA/DISPLAY



NISA/PATRAN INTERFACE

NISA: ANALYSIS CAPABILITIES

- *STATIC ANALYSIS – LINEAR & NONLINEAR* ● *STEADY STATE & TRANSIENT HEAT TRANSFER – LINEAR & NONLINEAR*
- *CONDUCTION, CONVECTION, RADIATION* ● *STEADY STATE & TRANSIENT DYNAMIC CAPABILITIES*
- *RANDOM VIBRATION* ● *SHOCK SPECTRUM* ● *FREQUENCY RESPONSE* ● *ELECTROMAGNETIC FIELD PROBLEMS*

DISPLAY: INTERACTIVE GRAPHICS CAPABILITIES

- *GENERATES MESH* ● *MODIFIED MESH* ● *VERIFIES MESH* ● *INDICATES ELEMENT DISTORTION*
- *MINIMIZES WAVEFRONT* ● *GENERATES 3D VARIABLE THICKNESS ELEMENTS FROM SHELL ELEMENTS*

LICENSE THE ENTIRE NISA/DISPLAY PROGRAM OR ONLY THOSE MODULES/INTERFACES YOU SELECT

- *NISA STATIC* ● *NISA DYNAMIC* ● *NISA-COMPOSITES* ● *NISA FATIGUE* ● *NISA HEAT TRANSFER*
- *SEPS (SECTIONAL PROPERTIES)* ● *SAMS (MODAL ANALYSIS)* ● *ISOCROS (SECTIONAL PROPERTIES PROGRAM)*
- *DISPLAY INTERACTIVE GRAPHICS* ● *3D FLUID FLOW* ● *AISC/ASCE CODE CHECKING* ● *MANY OTHERS*

INSTALL NISA/DISPLAY ON YOUR MAINFRAME, SUPERMINI, MINI, MICRO, OR PERSONAL COMPUTER

- *ALPHA-MICRO* ● *AMDAHL* ● *APOLLO* ● *BURROUGHS* ● *CADLINC* ● *CDC* ● *COMPUTERVISION APU, CDS 3000 & 4000 (SUN MICRO)*
- *CRAY* ● *DATA GENERAL* ● *GOULD SEL* ● *HARRIS* ● *HITACHI* ● *HONEYWELL* ● *HP1000 F, A.600, A.700, A.900* ● *HP9000*
- *IBM (ALL OPERATING SYSTEMS, ALL COMPUTERS SUCH AS 370, 4300, 3080 SERIES & P.C. XT/AT* ● *PERKIN-ELMER* ● *PRIME*
- *SUN MICRO* ● *VAX* ● *UNIVAC* ● *THE SUPER COMPUTER, ELXSI* ● *AND OTHERS*

GRAPHICS DEVICES (NISA is independent of graphical devices)

- *ADAGE* ● *AED* ● *HP* ● *IBM 3279 & 5080* ● *LEXIDATA* ● *MEGATEK* ● *RAMTEK* ● *RASTER TECHNOLOGY* ● *SEIKO*
- *SILICON GRAPHICS* ● *TEKTRONIX* ● *MANY OTHERS*

NISA IS INTERFACED WITH THE PRE- & POST-PROCESSORS OF THE FOLLOWING CAD/CAM SYSTEMS

- *APPLICON* ● *AUTO-TROL* ● *ANVIL 4000* ● *CADAM* ● *CAEDS* ● *CALMA* ● *COMPUTERVISION* ● *GERBER* ● *GRAFTEK*
- *INTERGRAPH* ● *MOVIE.BYU* ● *PATRAN-G* ● *SUPERTAB* ● *AND MANY, MANY, OTHERS*

PURCHASE OR LEASE NISA/DISPLAY JUST ONCE, EMRC WILL PROVIDE FREE ADDITIONAL COPIES.

- *SAME PRICE FOR 1-100 NISA INSTALLATIONS ON SAME BRAND OF COMPUTER SYSTEM AT ONE SITE. FOR EACH DIFFERENT COMPUTER SYSTEM AT ONE SITE, THE ONLY ADDITIONAL CHARGE IS THE COST OF AN ANNUAL MAINTENANCE CONTRACT.*
- *PRICE RANGE: \$500-\$2000./MO. (LEASE), PERSONAL COMPUTER \$1000.-\$5000. (PURCHASE), MINI COMPUTER \$5000.-\$30,000. (PURCHASE), SUPERMINI AND MAINFRAME \$10,000-\$60,000 (PURCHASE).* ● *ALL PRICES ARE FOR UNLIMITED USAGE*

EMRC WORLDWIDE SALES & SUPPORT OFFICES: ARGENTINA, AUSTRALIA, BELGIUM, ENGLAND, FRANCE, GERMANY, GREECE, HONG KONG, INDIA, ITALY, JAPAN, KOREA, THE MIDDLE EAST, THE NETHERLANDS, SINGAPORE, SOUTH AFRICA, SWEDEN, SWITZERLAND, TAIWAN, AND OTHERS.

CONTACT: DR. KANT S. KOTHAWALA, ENGINEERING MECHANICS RESEARCH CORPORATION, 1707 WEST BIG BEAVER ROAD, TROY, MICHIGAN 48084 (U.S.A.), TELEPHONE (313) 643-6222, TELEX 469232

● **CADAM:** NISA to CADAM meshfile and CADAM to NISA interface, along with macro geometry interfaces, are available. All pre- and post-processing capabilities of CADAM are interfaced with NISA, allowing data conversion from CADAM to NISA and vice versa easily. Complete mesh generation, checking of distortion index, wavefront optimization, modification or verification of elements are performed in the CADAM environment without leaving the CADAM workstation and submitted to NISA for analysis in the same environment. Distorted mesh element geometry may be brought back to CADAM for redesign.

● **COMPUTERVISION:** NISA/DISPLAY on Computervision's APU CDS 4000 and CDS 3000 (Computervision's Sun Microsystems workstation). The general purpose finite element program NISA is now available for static, dynamic (steady state and transient analysis) and heat transfer (steady state and transient analysis). The interactive graphics program, DISPLAY, is also available on Computervision's APU CDS 4000 and CDS 3000 to generate 2D and 3D mesh. All these capabilities make NISA/DISPLAY one of the most desired programs for Computervision users.

Also available are the complete pre- and post-processing capabilities of Computervision which are interfaced with NISA. NISA data deck can be generated directly from the Computervision's mesh generator and allows one to perform all the post-processing of NISA output.

● **IBM PC AT/XT:** Availability of the large scale general purpose program, NISA/DISPLAY on IBM's PC AT/XT makes it possible for many engineers to use some of the most sophisticated capabilities to solve a wide variety of structural problems (including electromagnetic and field problems) for static, dynamic, and heat transfer analysis (conduction, convection and radiation).

● **NEW NISA HEAT TRANSFER CAPABILITIES:** The new NISA linear and nonlinear heat transfer capabilities (for conduction, convection and radiation) is now considered to be one of the best available worldwide.

● **WHY NISA:** The new heat transfer capability; outstanding capabilities in simulating layered and composites structures; unique capabilities to analyze problems in dynamics to solve for mode shapes and natural frequencies, transient dynamics, shock spectrum, frequency response, and random vibration; and the extensive and highly accurate element library make NISA a leader in finite element programs for solving a wide variety of problems for linear and nonlinear analyses.

● **EXCELLENT DOCUMENTATION:** Users Manuals are thoroughly documented and well written. Included are hundreds of verification problems. The results are compared with known solutions and other commercially available programs to assure the excellent reliability of NISA/DISPLAY. A NISA Users Manual, NISA Verification Manual, NISA Demonstration Problems Manual, DISPLAY Users Manual, and DISPLAY Demonstration Problems Manual are available from EMRC or an EMRC agent.

● **MOST EFFECTIVE AND UNIQUE EVALUATION METHOD FOR NEW CUSTOMERS:** A FREE COPY OF THE NISA/DISPLAY FINITE ELEMENT/INTERACTIVE GRAPHICS PROGRAM FOR 90 DAYS. EMRC is offering free copies of the entire NISA/DISPLAY program, including the extensive pre- and post-processing programs, to qualified NEW CUSTOMERS for a 90 day evaluation period.

● **CONTACT:** DR. KANT S. KOTHAWALA, EMRC, P.O. BOX 696, TROY, MI 48099 (313)643-6222, TELEX: 469232.

NISA FINITE ELEMENT LIBRARY

ELEMENT TYPE	DISPL		LINEAR	PARABOLIC	CUBIC	LINEAR PARABOLIC	LINEAR PARABOLIC	LINEAR CUBIC	PARABOLIC CUBIC	LINEAR PARABOLIC CUBIC
	D.O.F.									
2D ISOPARAMETRIC PLANE STRESS PLANE STRAIN AXISYMMETRIC	UX, UY									
AXISYMMETRIC SHELL ELEMENTS	UX, UY, RZ									
2D ISOPARAMETRIC AXISYMMETRIC ELEMENTS WITH UNSYMMETRIC LOADING	UX, UY, UZ									
AXISYMMETRIC SHELL ELEMENTS WITH UNSYMMETRIC LOADING	UX, UY, UZ RX, RY, RZ									
3D ISOPARAMETRIC GENERAL SHELL SANDWICH AND LAMINATED COMPOSITE SHELL	UX, UY, UZ RX, RY, RZ									
3D ISOPARAMETRIC THICK SHELL	UX, UY, UZ									
3D ISOPARAMETRIC SOLID ELEMENTS	UX, UY, UZ									
3D ISOPARAMETRIC SUPER SHELL	CORNER NODES: UX, UY, UZ MIDSIDE NODES: UX, UY, UZ RX, RY									
OTHER ELEMENTS	1D, 2D, 3D • MASS • SPAR • AXIAL SPRING • TORSIONAL-SPRING	• GAP & FRICTION ELEMENTS INCLUDING TENSION ONLY OR COMPRESSSION ONLY								SANDWICH SHELLS TYPICAL CONSTRUCTION METAL-FOAM-METAL, COMPOSITE-HONEYCOMB-COMPOSITE, MAY BE MULTILAYERED LAMINATED COMPOSITE SHELLS SYMMETRICAL OR UNSYMMETRICAL LAYOUT



A FULL SERVICE ENGINEERING COMPANY
A LEADER IN THE FIELDS OF:

- FINITE ELEMENT ANALYSIS •
- KINEMATIC AND DYNAMIC ANALYSIS •
- MODAL TESTING •
- TOLERANCE/VARIATION ANALYSIS •
- DURABILITY TESTING •
- VIBRATION TESTING AND STRESS ANALYSIS •
- CUSTOM TEST SYSTEMS •

SMTC CORPORATION
26091 SHERWOOD
WARREN, MICH. 48091



RAJ BODEPUDI, Ph.D.
INVESTMENT ADVISOR

20 NORTH WACKER DRIVE
SUITE 1711
CHICAGO, ILLINOIS 60606
(312) 372-3281
1-800-237-3762 EXT. 923

Dr. Raj Bodepudi received his Ph.D. in Economics from Wayne State, where he won the Blum Award for writing the best doctoral exams and received his M.A. in Economics, First Rank, from Osmania University. Dr. Raj is the founder of Lincoln Equities, Inc., a Chicago based investment banking and brokerage firm and a former Vice President of Oppenheimer & Co. He is currently

a registered investment advisor and a consultant to many corporations & pension plans.

Lincoln Equities, Inc., Chicago, IL 60606.
(312) 372-3280

We Can Bring Our Expertise To Your Company. . .

Multiface, Inc.

Engineering and Management Consultants Since 1978

*Specializing in
Training and Problem Solving*

Present areas of concentration:

- Statistical Process Control
- Quality Control Systems
- Reliability Engineering
- Management Systems
- Productivity Improvement

GM, FORD, ALLEN-BRADLEY, SELLER-GLOBE,
THERM-O-DISC, BENDIX, FEDERAL MOGUL and
NATIONAL STEEL are among our long list of clients

MULTIFACE, INC.

H.J. Bajaria, President
27206 Wilson
Dearborn Heights, Michigan 48127
313-277-5692

PATTANAİK and SHAW Associates, Ltd.

Accountants, Investments & Tax Consultants

**7071 Orchard Lake Rd.
W. Bloomfield, MI 48033
(313) 851-5197
(313) 851-5183**

TAX PLANNING TOOLS! INVESTMENTS!

- **Real Estate Programs with 2 to 3:1 tax deductions & tax credits***
Apartments, Shopping Centers, Office Buildings, Hotels, Condominiums, and Single Family Housing Projects
- **Waterfront Properties in HAWAII and FLORIDA**
- **High Tech Programs with Substantial Tax deductions & tax credits**

• Specialized Investments for non-resident investment in India in Housing, Hotels & Office Buildings, Technology Transfer, Computerization and Manufacturing Operations

- Some with substantial cash flow
- Some with very little or no cash down

*** INVESTMENT TAX CREDIT,
HISTORICAL PRESERVATION CREDIT
R and D CREDIT**
Excellent for Tax Retrieval from 1982, 1983 & 1984

For detailed information, please call

PATTANAİK & SHAW ASSOCIATES, LTD.

A subsidiary of LAKSHMI INVESTMENT GROUP, Inc.

AAFP/SIPC/NASD Broker Dealer

Toll Free: 1-800-LAKSHMI

Tennessee

S.B. Shaw, MBA, CPA
3356 Dungleen
Memphis, TN 38118
(901) 365-8655

Indiana

Dr. J.L. Jain
7335 W. Jefferson
Fort Wayne, IN 46804
(219) 432-5246

Indianapolis Area:

Peter Surana
(317) 888-8592

New York

Deepak Gulati, MBA
301 E. 78th St.
Suite 16 E
New York, NY 10021
(212) 794-8516
Manu Patel
Sebastian Court Rd., No. 3
Hopewell Junction, NY 12533
(914) 896-6125

Illinois

B.C. Dash, MBA
801 N. Cass Ave.
Suite 300
Westmont, IL 60540
(312) 789-3311
Chicago Area:
Jesi Shah, BS
(312) 259-8001
Manu G. Patel, MS, MBA, CPA
(312) 747-9754
Narayan Das, Ph.D.
(312) 887-1148
Surya K. Misra
(312) 355-5193

Florida

Durga Misra
6000 Twin Lakes Dr.
S.W. 64th Ave.
Miami, FL 33143
(305) 592-8680

Tampa Area:

Mahendra Doshi
(813) 870-0040

Hawaii

John Mitchell
(808) 734-1268

Kentucky

Dr. A.K. Mohanty
(606) 623-7146

Louisiana

Jitu Patel
(504) 347-3235

Michigan

Carl Moore
Moin Ansari
Willis Birch
Dennis Clifford
Udai Sangwan
Madhav Palnitkar
Ladukesh Pattanaik
Joseph Nazareth
Mirza M. Ahmad
Ramesh Patel
Ramon Villanueva
Hare K. Patanaik
(313) 851-5197
(800) LAKSHMI

Maryland/DC

Rudy Sinha
(301) 864-6556
Chandu Doshi
(301) 859-5375
Pratap Das
(202) 651-5160

Massachusetts

Mangal Gupta
(413) 637-1100

Missouri

Rajesh Vora
(314) 423-6065

Ohio

Jayant Patel
(513) 426-5881

South Carolina

Ashok Swain
(803) 281-5652

Texas

M.R. Yousuf, MBA, CPA
(713) 441-4619

American Society of Engineers from India

A Seminar on "US/INDIA Business Opportunities"

Northfield Hilton, Troy, Michigan

Saturday, August 17, 1985

1:30-6:00 P.M.

1:30 SEMINAR REGISTRATION

2:00 WELCOME REMARKS BY CHAIRMAN

MODULE I, 2:05 - 3:00 P.M.
"Business/Investment Opportunities"
Moderator: Ramesh Patel

TOPIC

SPEAKER

OBJECTIVE

India's Recent Liberal Trade Policies

• P.S. Sahai
Minister of Commerce
Indian Embassy, Wash. D.C.

• Indian Govt's New Trade Policies in Regards To: Industrial Joint Ventures, Import/Export and Tax
• How to 'Cash-In' on New Opportunities?

Business Opportunities

• M. Santugi
Director International Trade
State of Michigan, Lansing

• How is Indian Economic Climate Perceived from U.S. Point-of-View?

Import Export Opportunities

• P.K. Banerjee
Engrg. Export Promotion Council
Chicago, Ill.

• What are They?

Types of Investment

• Dr. Mathur
India Investment Center
New York, N.Y.

• How to Make Your Money Grow.

MODULE II, 3:05 - 4:00 P.M.*"Transfer of Technology/Development of Rural India"*

Moderator: Umesh Rohatgi

TOPIC	SPEAKER	OBJECTIVE
Technology Transfer	<ul style="list-style-type: none"> • G.S. Cole Principal Staff Engr. Ford Motor Co. Dearborn, MI • P.K. Rastogi Head, Metallurgy Lab Inland Steel, Gary, IN 	<ul style="list-style-type: none"> • How Other Developing Countries Are Doing It? • 'TOKTEN' - Transfer of Knowledge Through Expatriate Nationals
Village Development	<ul style="list-style-type: none"> • Dr. C.N. Kashkari Elect. Engrg. Dept Univ. of Akron, Ohio • H.S. Lamba India Development Center Chicago, Ill • S.N. Subbarao Director National Youth Project, India. Mahatma Gandhi Seva Ashram, Chambal, India 	<ul style="list-style-type: none"> • Needs of Rural India • Uplifting of Villages

COFFEE BREAK 4:00 - 4:15 P.M.**MODULE III, 4:15 - 6:00 P.M.***Case Studies: "Successful Business People"*

Moderator: Kanu Mehta

TOPIC	SPEAKER	OBJECTIVE
	<ul style="list-style-type: none"> • Raj Gopal Head, Indus Technology Pittsburgh, PA • Kant Kothawala President, Engrg. Mechanics Research Corp. (EMRC) Mich. • Prakash Shah General Partner, Bliss & Co., NYC Chairman & CEO, Language Resources Inc., Boulder, CO • Gajanan Sabnis President, Technology Transfer Consultant Silver Spring, MD 	<ul style="list-style-type: none"> • How to Succeed at Entrepreneurship? • What Does It Take? • Do's & Don'ts • New Opportunities In: Manufacturing, Consulting, Import/Export.

INTERFACE ELECTRONICS



Authorized IBM Value Added Dealer



We have a complete line of "**IBM SYSTEMS**" for professionals & small businesses. For physicians, we have a complete turn-key system for Physicians Office Management. If you have requirements for IBM PC's and compatible peripherals, we offer a better alternative than retail stores.

Write or call TODAY for your needs

21134 Bridge
Southfield, Michigan 48034

(313) 352-8820

Attn. Kirit Bakshi / Ketan Bakshi

EVENING BANQUET

6:30 P.M.	Poolside Reception
7:30 P.M.	Dinner
8:30 P.M.	State of A.S.E.I. Address President Yogi Anand
8:40 P.M.	Awards Ceremony
9:00 P.M.	Keynote Address - Mr. P.S. Sahai Minister of Commerce Indian Embassy, Washington, D.C. Guest Speaker - Mr. M. Santugi Director International Trade State of Michigan
9:45 P.M.	Entertainment
10:30 P.M.	Adjourn

DINNER MENU

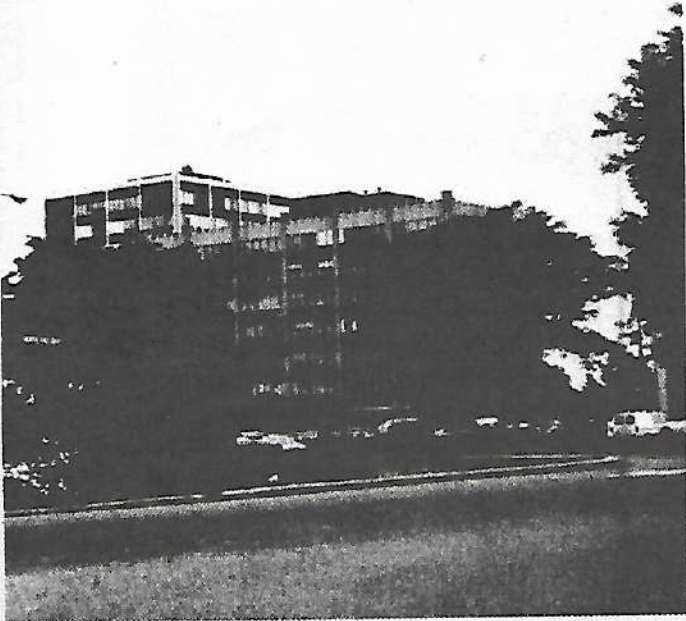
*Garden Salad, Blue Cotton Cheese Chicken,
Spicy Vegetable/Nan, Rice Pilaf, Mango-Pecan Ice Cream*

ENTERTAINMENT

A renowned dance troupe of Ms. Sudha Chandrashekar

MAX M. ALI, M.D., F.R.C.S.

20905 Greenfield
Suite 200
Southfield, MI 48075



**HCA HEMORRHOID
CLINICS OF
AMERICA**

"The Alternative to Surgery"

CRYOGENICS, BANDING & LASER
Treatment of Hemorrhoids and other minor
anorectal ailments.

- No hospitalization necessary.
- Most major insurance plans accepted.

FREE BROCHURE

Call: 1-800-422-CURE
(Michigan residents only)

or

(313) 557-7797

(313) 349-3744

P. D. Deo, Ph.D., P.E.
Director of Engineering



**and
Associates,
Incorporated**

Soils - Foundations - Construction Materials
Metallurgical and Hydrogeology Consultants

46408 Grand River Ave., Novi, Michigan 48050

WITH COMPLIMENTS

RAJ KHATRI, P.E. & L.S.



DJG & Associates, Inc.
CONSULTING ENGINEERS

(313) 574-1090

30500 Van Dyke, Suite 803
Warren, MI 48093

TELEPHONE (313) 721-2100

PRA/SAD & ASSOCIATES

Engineers • Architects • Planners • Construction Managers

JALDHAR PRASAD P.E.
PRINCIPAL

2909 S. WAYNE ROAD
WAYNE, MICHIGAN 48184

ACROSERVICE CORP.

AUTOMOTIVE • DEFENSE

**ENGINEERS • DESIGNERS • TECHNICIANS • PROGRAMMERS
NEEDED FOR MAJOR NEW PROGRAMS BASED IN MICHIGAN**

- MICHIGANS FASTEST GROWING AUTOMOTIVE PLACEMENT SPECIALIST
- SPECIALIZING IN AUTOMOTIVE CONTRACT & AGENCY WORK
- WE OFFER TOP PAY & OUTSTANDING BENEFITS TO OUR EMPLOYEES

**RUSH RESUME TO:
ACRO SERVICE CORP.
P.O. BOX 9040
LIVONIA, MI 48151**

DKI Group Engineers, Inc.

**A Multi-Disciplinary
MBE/WBE Engineering,
Planning and Construction
Management Firm**

**Environmental
Energy
Transportation**

Corporate Headquarters:
Concord Commons
1481 Ring Road
P. O. Box 1339
Calumet City, Illinois 60409
312 891.0600

"DKI Group Engineers has the capability to set up project offices anywhere in the U.S. or overseas. This allows the prime consultants to meet a project's MBE/WBE requirements, and maintain quality assurance of production with a DKI design/field team. DKI Group Engineers is one of the few MBE/WBE firms with this flexibility and quality level of expertise in environmental, energy and transportation engineering disciplines."

*D.K. Gupta, PE, President
DKI Group Engineers, Inc.*

COMPUSOFT INTERNATIONAL

MANAGEMENT SYSTEMS CONSULTANTS
19334 FIVE POINTS
DETROIT, MICH. 48240
PHONE (313) 537-8213

(313) 341-6972

**ASSOCIATED CONSULTING
ENGINEERING SERVICES, INC.**

CONSTANCIO F. MIRANDA, Ph.D., P.E.
PRESIDENT

P.O. Box 21173
COLLEGE PARK STATION
DETROIT, MICHIGAN 48221

RAMA RAO & ALFRED, INC.

CONSULTING ENGINEERS
18447 WEST 8 MILE ROAD
DETROIT, MICHIGAN 48219

ALFRED McDANIEL, P.E.
VICE PRESIDENT

PHONE
(313) 535-9580

AMERICAN GRAPHITE CORPORATION

21756 DeQuindre Road
Warren, Michigan 48091

GUY PATEL
President

TEL: (313) 757-3540

- Transfer Super 8 and 16mm home movies onto video cassette
- Panasonic VCR for India
- Low, low price on blank tapes
- Franchise inquiries welcome



Video Showcase

2418 Elizabeth Lake Road (Behind Pontiac Mall)
Pontiac, Michigan 48053
(313) 681-3339

TEXAS

MICHIGAN

NEW YORK

PRAYAG ASSOCIATES

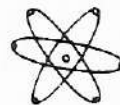
24161 Nilan Drive
Novi, Mi. 48050

(313) 471-5786

 **GMC Associates, Inc.**
ENGINEERS • SCIENTISTS • ECONOMISTS • MANAGERS

SATYA B. SEHGAL, Ph.D.
President

19720 Gerald
Northville, MI 48167
(313) 348-4425



Associated Energy, Inc.

CONSULTING ENGINEERING SERVICES

Mechanical • Electrical • Chemical • Civil
Energy • Quality Engineering

JACK AGRAWAL, PE, MBA
(313) 644-5171



Merrill Lynch

Merrill Lynch Pierce Fenner & Smith Inc.

A breed apart

Gian C. Janveja, M.B.A., C.F.M.

Assistant Vice President

OFFERS SERVICES IN:

- Financial Planning
- Pension & Profit Sharing Plans
- KEOGH & IRA Plans
- Stocks, Bonds & Mutual Funds
- Tax Shelters
- Options
- Precious Metals
- Foreign Currencies

The Financial Plaza
400 Town Center Drive
Suite 400
Dearborn, MI 48126
(313) 336-4500 (Office)
(313) 453-4567 (Home)

GOOD NEWS

1. Now you can have life insurance protection for your Entire Life and premiums payable for Only 5 Years.
2. 1st year cash value accumulation around 90% of the premium.
3. Cash values grow, tax free, keeping pace with changing economy and inflation.
4. Policy loan available at 8% interest.

To find out more about such "One-of-a-Kind" Whole Life Insurance plan please contact:



RAV PATEL
Independent Insurance Agent
5139 Reuter
Dearborn, MI 48126
Tel: (313) 846-7369

SKYLINE TRAVEL




IATA & ARC APPROVED

**25125 Michigan Ave.
SUITE 202
DEARBORN, MICHIGAN 48124**

For all your Domestic Travel Needs & Tour Packages,
Cruises or Travel to Europe &
All Other Travel Needs
Such as trips to India, Pakistan,
Bangladesh, Europe or any tours
within the U.S. including Las Vegas and Hawaii.

Please Call:
9 a.m. to 5 p.m.
(313) 277-2190
Evenings & Weekends
981-0936
Ashvin Parekh
Charu Parekh



We are honored to
be of service to the
Indian Community
in their times
of need.

JOHN N. Santeiu & SON INC.
FUNERAL DIRECTORS

*OVER FOUR DECADES OF SERVICE
Our Services include cremation or Burial.*

**1139 INKSTER ROAD
South of Ford Road
TELEPHONE: 427-3800**

GRAND OPENING AUGUST 16

Sitar

An authentic CUISINE of India specializing in best of
Vegetarian and Non-vegetarian delicacies.

LOCATION: 29550 Grand River Avenue
(1 Block W. of Middlebelt Road)
Farmington Hills, MI 48024

TELEPHONE: (313) 477-9000

HOURS: 11:30 A.M. to 2:30 P.M.
6:00 P.M. to 10:00 P.M.



VAN DYKE MEDICAL LABORATORY

THE COMPLETE SERVICE LABORATORY

- FULL RANGE OF INDIVIDUAL TESTS AND PROFILES
- COMPREHENSIVE QUALITY CONTROL PROGRAM
- FULLY ACCREDITED
- EXTENSIVE BILLING SERVICE

O. GANESH, M.D., EXECUTIVE DIR.
ANSELM OFODILE, PATHOLOGIST
LINDA L. CARROLL, ADMINISTRATOR

V.D.M.L.
22148 W. 9 MILE RD.
SOUTHFIELD, MI 48034

(313) 353-9780
(For Information contact Linda Carroll, Adm.)



a.g. & associates inc.

product engineering division

Since 1977, A. G. & Associates, Inc., (AGA), has specialized in providing and supplementing the Client's TECHNICAL HUMAN RESOURCE capabilities in all phases of Project Management and Engineering of various Automotive, Commercial, Industrial and Utility projects.

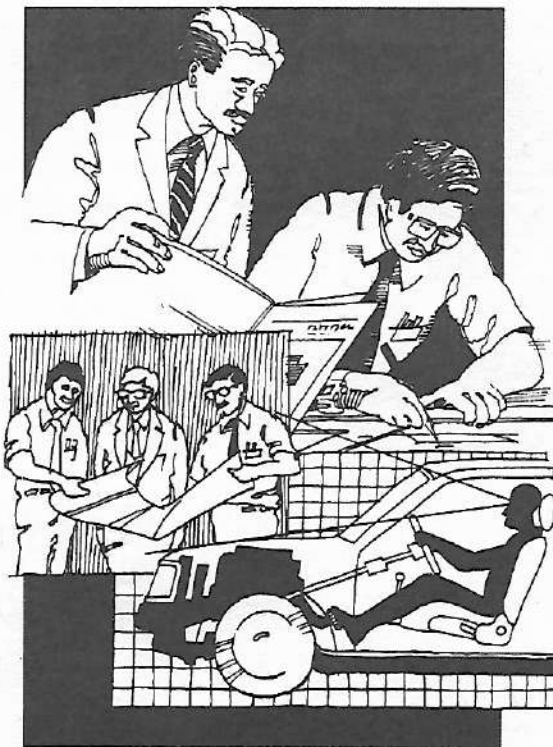
The real key to AGA's success lies in the on-going development of a dynamic, creative, pace-setting ORGANIZATION possessing all the operating elements and dedicated to providing superior, responsive, and effective services.

AGA's MANAGEMENT and trained human resource experts and recruiters are as conversant with Science and Engineering as they are with the most advanced techniques of personnel management and counselling.

Through continuous ADVERTISING in trade publications and local and national newspapers, AGA maintains a current listing of available personnel for immediate placement.

AGA's computerized resume file facilitates the prompt selection of the right person to the right assignment—at a competitive price!

AGA channels skills and creates systems to deal with the technical management needs in today's advancing technology. AGA's successful achievement in this area has provided Clients with valuable assistance when needed.



Product Design Engineering

- Automotive
- Military Vehicles
- Off-Road Vehicles
- Aerospace
- Electronics
- Body Design
- Chassis Design
- Transmission Design
- Electrical Systems Design
- Engine Design
- Finite Element Analysis
- Structures
- Plastics

Production Engineering

- Fixture Design
- Gage Design
- Die Design
- Special Machine Design
- Conveyor Design
- Material Handling Systems
- Robotic Applications

Technical Publications

- Graphic Illustration
- Technical Writing
- Documentation
- Translation

Diversified Services

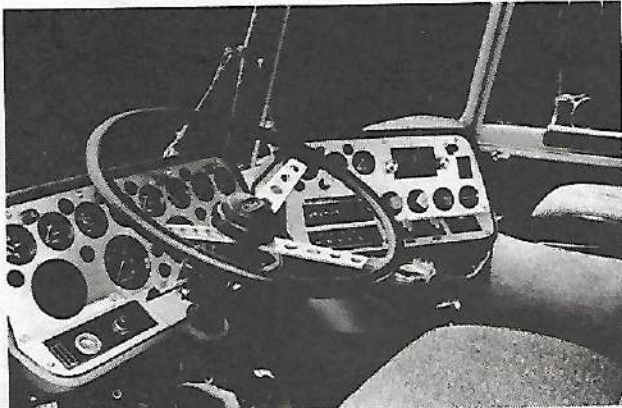
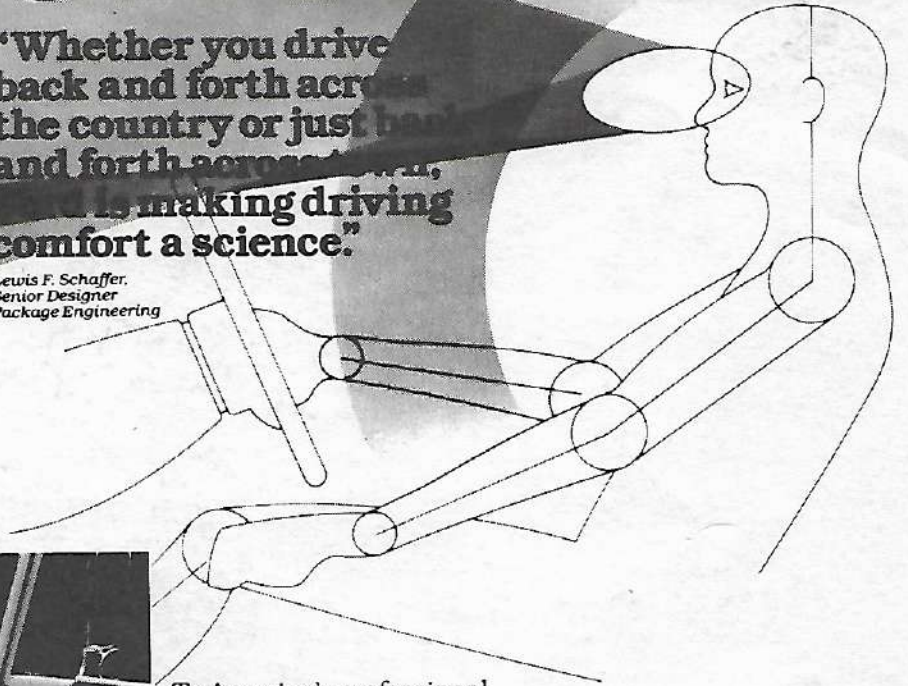
- Temporary Clerical Services
- Shop Personnel
- Computer-Aided Design
- Direct Placement

ERGONOMICS



"Whether you drive back and forth across the country or just back and forth across town, Ford is making driving comfort a science."

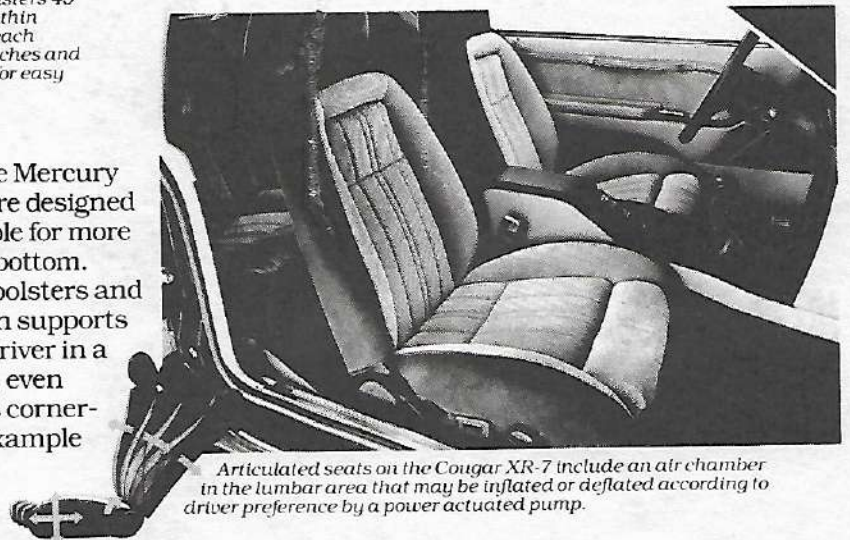
*Lewis F. Schaffer,
Senior Designer
Package Engineering*



In this CL 9000, Ford clusters 45 gauges and controls within easy to read, easy to reach range. All gauges, switches and bulbs are plug-in type for easy service.

To America's professional drivers, the cab of a heavy truck is their office and—for days at a time—their home. That's why Ford Motor Company ergonomic engineers design these cabs from the driver out.

The seats in the Mercury Cougar XR-7 are designed to be comfortable for more than just your bottom. Moveable seat bolsters and adjustable thigh supports help keep the driver in a stable position, even while the car is cornering. Another example of Ford Quality you can feel.



Articulated seats on the Cougar XR-7 include an air chamber in the lumbar area that may be inflated or deflated according to driver preference by a power actuated pump.

Get it together—Buckle up!



Ford • Lincoln • Mercury • Merkur
Ford Trucks • Ford Tractors

**Quality
is Job 1.**